



**Provincia
di Pesaro e Urbino**



**Equitable and sustainable
wellbeing (BES) measures
to support policy making and local
government in a Province:
planning study**

**Paola D' Andrea (SO of Pesaro-Urbino Province)
Stefania Taralli (Istat)**

DPS -Dipartimento per lo Sviluppo e la coesione economica e Provincia di Roma

Benessere dei cittadini e politiche di sviluppo territoriale

Rome, 31 May 2013





1 - BES indicators at local level: a project overview

Paola D'Andrea

Statistics Office of Pesaro-Urbino Province

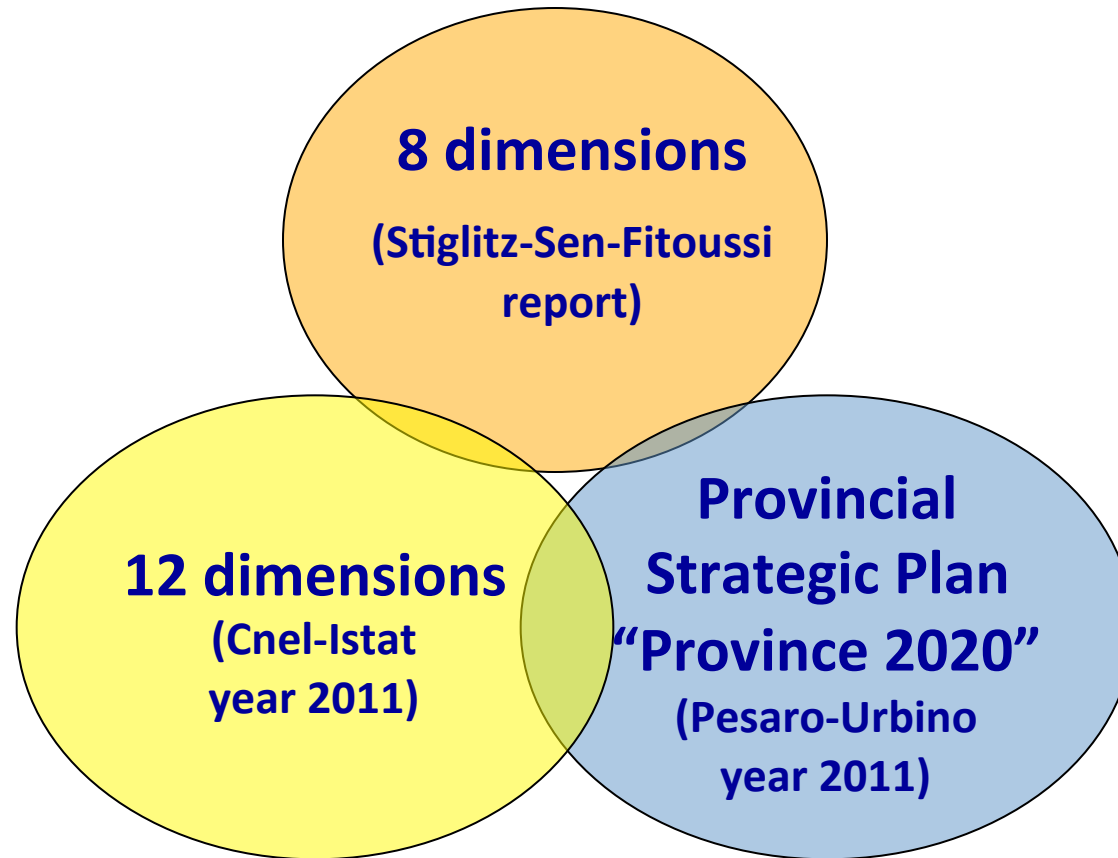


“Data analysis and statistical research to assess equitable and sustainable wellbeing (BES) of Provinces”

A pilot project included in the current
Statistical National Program
2011-2013 (PSU – 00003)
promoted and managed by
Pesaro-Urbino Statistics Office
with the scientific supervision and technical support
of ISTAT- Italian Statistical Institute



Theoretical framework





BES indicators applied to the Province's governance

Statistical objectives

Summary

Result

Architecture

*theoretical definition of BES and
specific application*

*taxonomy of connections among BES dimensions
and administrative functioning of a Province*

basic construction of a Statistical Information System



Implementing a set of Provinces BES indicators

Several indicators are proposed, at national and international level, to measure well-being.

To define a basic set of Provinces BES indicators we carried out

- a preliminary data exploration and assessment
- a taxonomical evaluation analysis to identify links between BES logical framework and the geographical and administrative focused level.



Provinces BES SIS: grid of analysis

Indicators were selected in order to support some descriptive and explorative analysis based on the most up-to-dated statistics and on specific issues.

The SIS includes both indicators that are relevant to national or international level and to specific information needs.

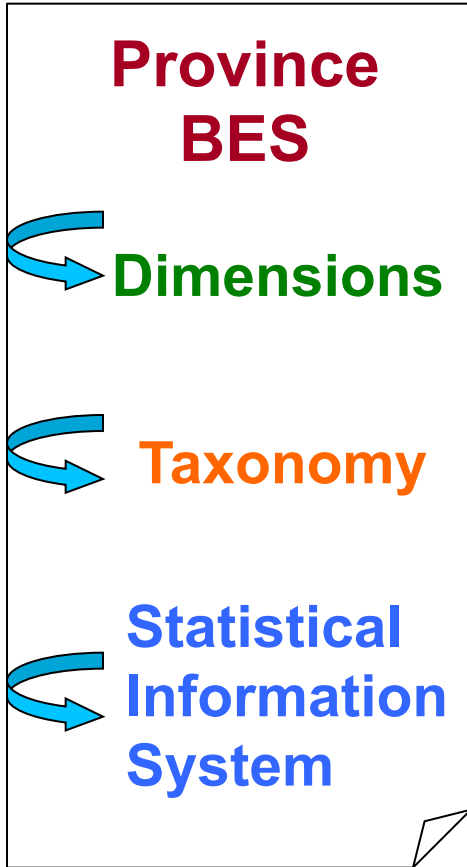
Ecological analysis	Spatial analysis
General relevance	Specific relevance

General indicators are going to be released;

A number of specific indicators were identified and are now in calculation and assessment



Any specific BES indicator is related to the BES dimension it mainly pertains to.



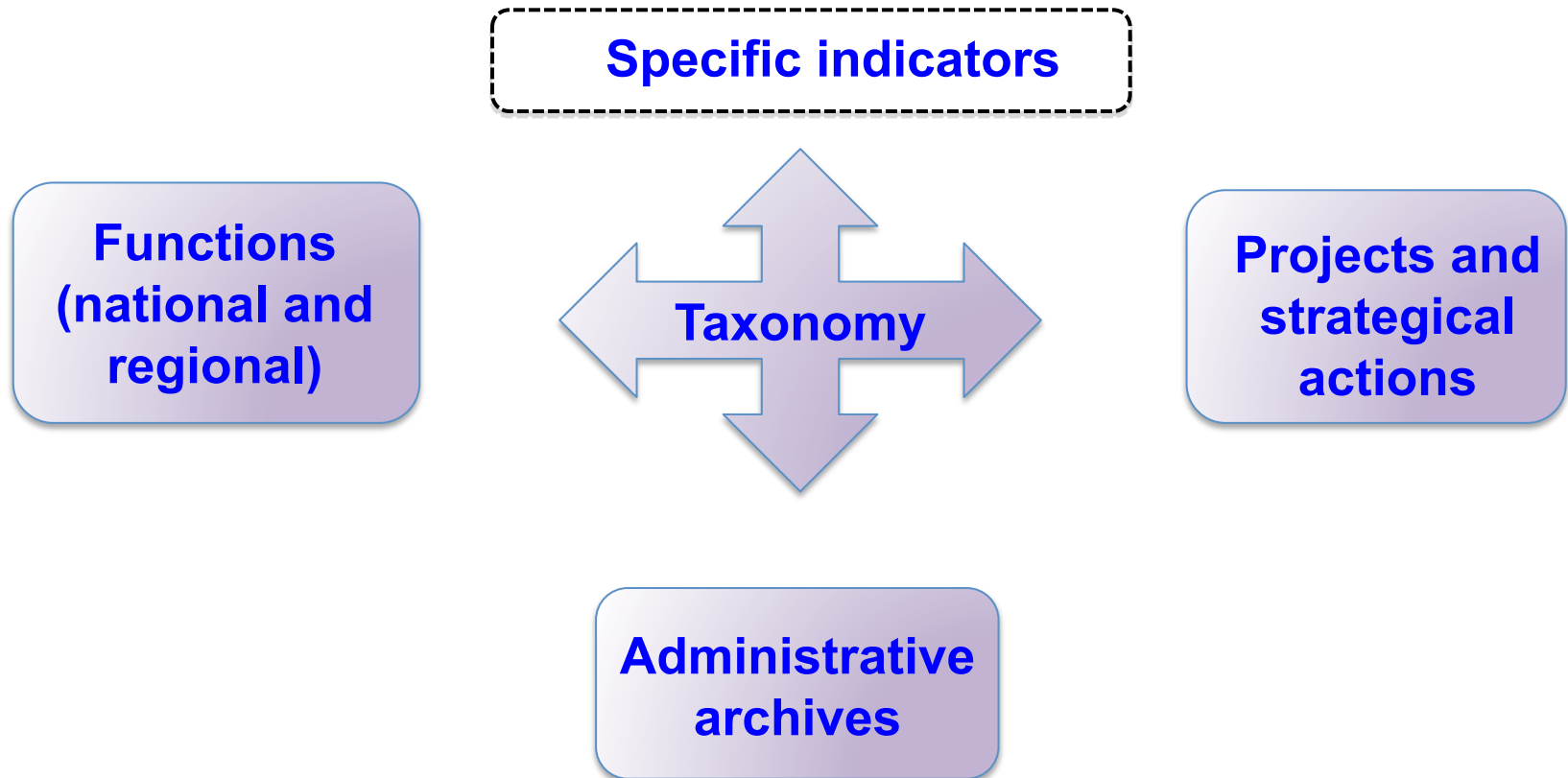
Istat-Cnel Leading Committee

Connections among BES dimensions and functions, services, projects and archives of the Province

Statistical indicators relevant to general, territorial and strategical BES



Provinces' BES indicators





Website www.besdelleprovince.it

Tool for publishing the results

Statistical dataset will be delivered through the website.

Queries can be made by Relevance (general, specific), BES dimension, Theme, to select indicators and data to be analyzed.

In order to assess data quality and statistical-exploitable information, the database related to indicators meta-information as well as the results of the assessment of the Pesaro-Urbino Province's archives, can be browsed and queried on-line using the website tools



Administrative archives assessment

The focus on structural and reference metadata concerning Provinces administrative archives is necessary to identify the sources of the statistical information to embed in the scheme of the BES dimensions.

The aim is to verify the quality of any administrative archive and its usefulness for a pilot production of official statistics.

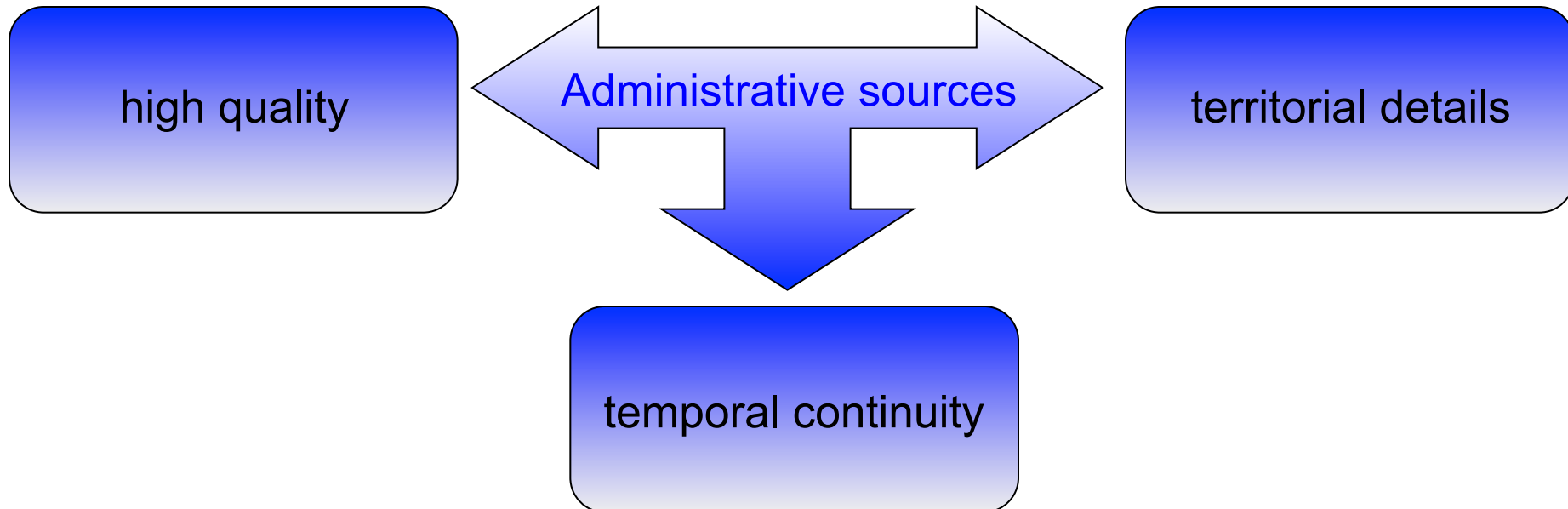
So doing, it is possible to schedule BES indicators of specific and/or strategic relevance.



Province's BES SIS requirements

Administrative archives

- overview of Province's informations outsourcing
- priority to those archives with features of





Outlook and development

Joint feasibility study involving other Italian Provinces

Goal: arranging and sharing an homogeneous informative base to be published on website www.besdelleprovince.it

Tools: on-line interfacing and cooperation services

Partnership: Istat, Sistan, UPI-CUSPI

Organization: CUSPI coordination of the project group; Istat scientific supervision and methodological support



2 - BES indicators at local level: application to policy-cycle and evaluation

Stefania Taralli – Istat Marche



Summarizing: “Provinces’ BES”

A **theoretical framework** concerning connections between the local governance and the local community well-being;

A **prototype of SIS** - Statistical Information System that

- Provides a dashboard of statistical indicators that are both **relevant** for specific information needs at local level and **consistent** with the national framework;
- Is **suitable to support the policy-cycle** at local level.



Defining a local “2020 vision”

How's going life
in the focused
province?

S

W

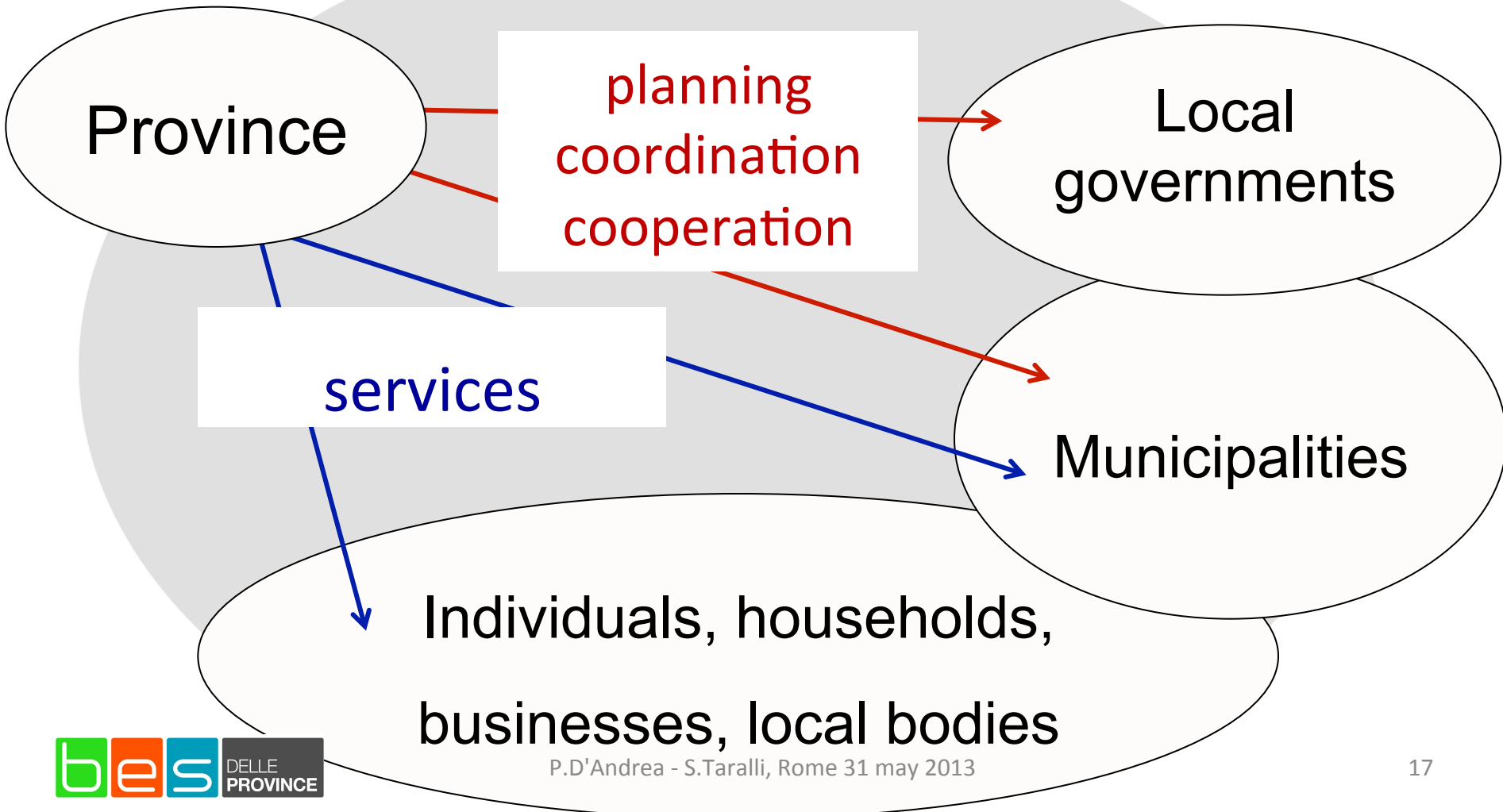
O

T

How the Province
policies can affect
the community
well-being?



Functioning of Provinces





Governance

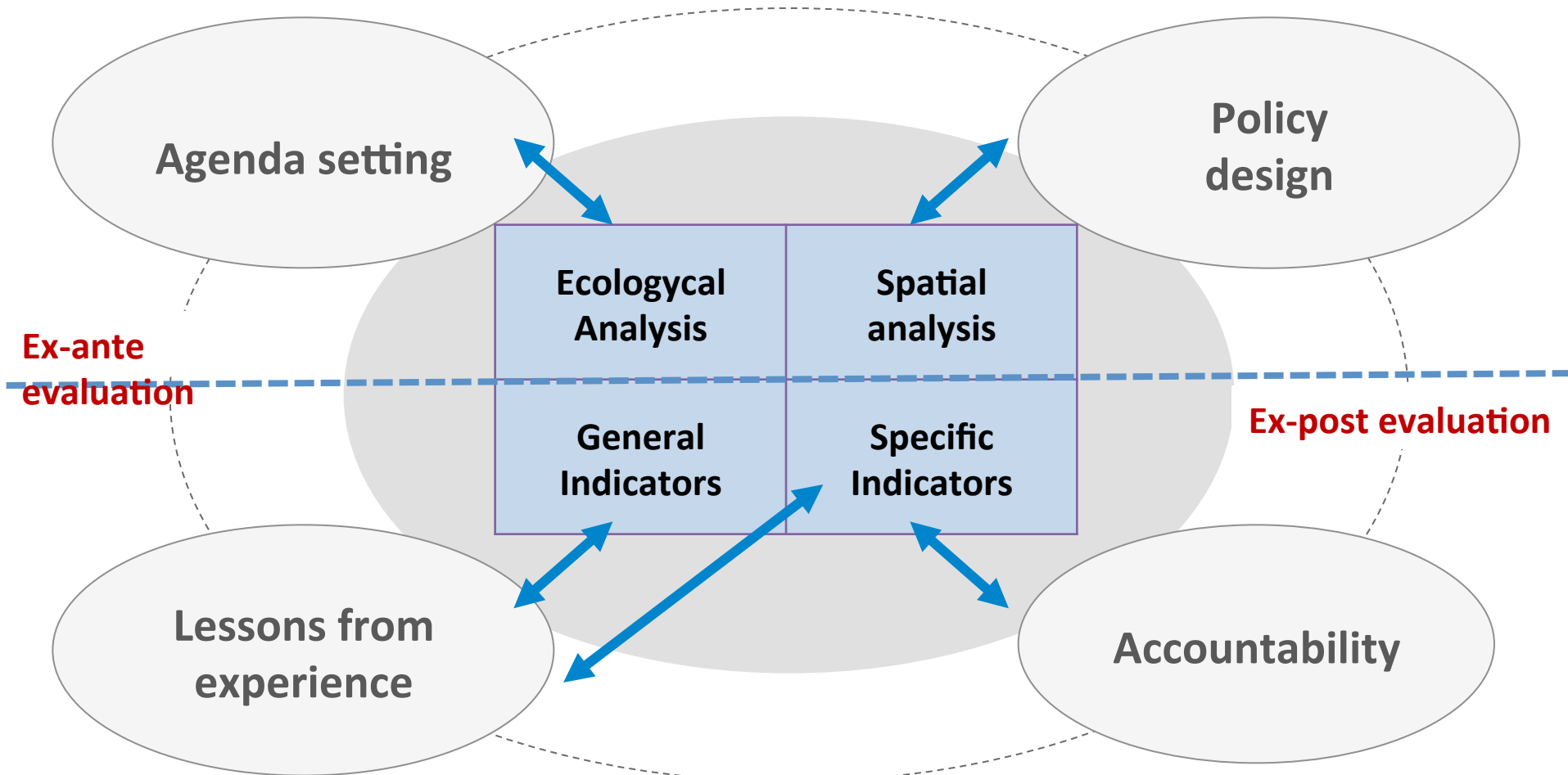
=

“governing without government”

- **Transparency of decision-making process**
- **Stakeholders consultation and inclusion**
- **Accountability of public policies**



Provinces' BES SIS and democratic participation to the policy-cycle





Main issues

Statistical

- Data availability
- Indicators performance
- Change of meaning
- Reduced relevance
- Unknown quality of additional data sources

Evaluative

- Indicators legitimation and social acceptance
- Different services and goals of Italian Provinces
- Different and unknown availability of data (specific indicators)



“Provinces’ BES”: a work in progress

Brief report on “Pesaro-Urbino BES”

Brief reports on some Italian Provinces BES

2011

2012

2013

2014

2013

2014

Starting of the joint feasibility study

Prototype of PU Province’ BES SIS

Prototype of Provinces’ BES SIS



Follow us at
www.besdelleprovince.it

Contact us @
bespu@provincia.ps.it

Thank you!